

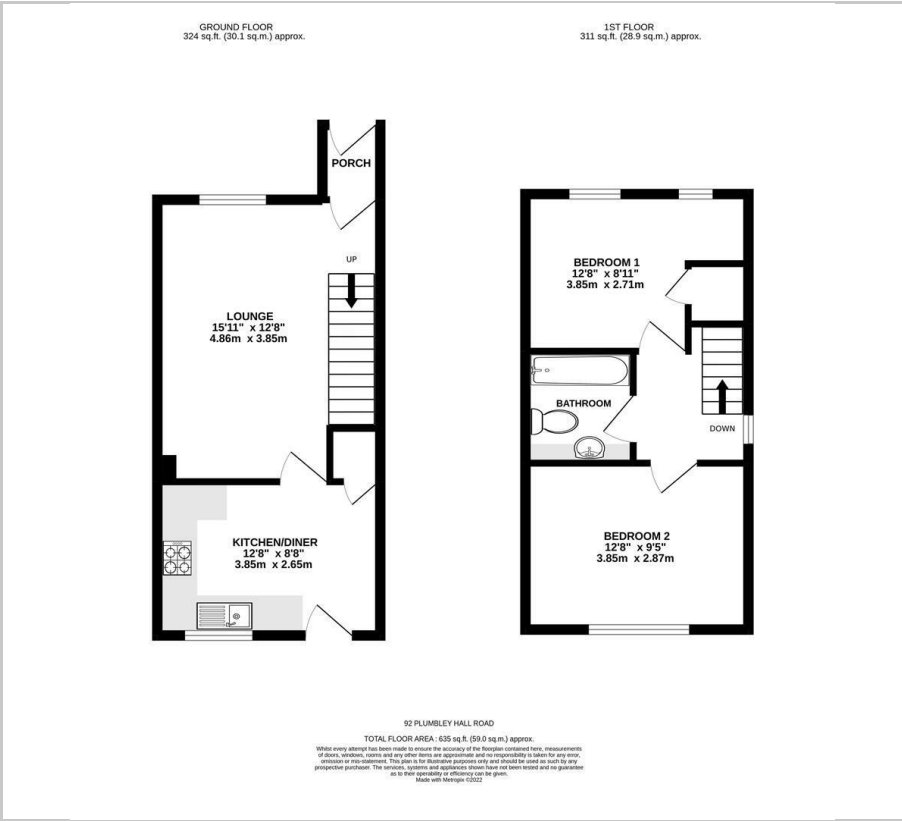


92 Plumbley Hall Road

, Sheffield, S20 5EG

Offers in the region of £210,000

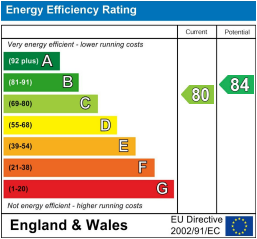
Floor Plan



Area Map



Energy Efficiency Graph



Viewing

Please contact our Ready Steady Move Sales Office on 0114 395 1722 if you wish to arrange a viewing appointment for this property or require further information.

- VIEWING IS A MUST
- 2 DOUBLE BEDROOMS
- ALLOCATED OFF ROAD PARKING TO THE REAR OF THE PROPERTY
- HIGHLY SOUGHT AFTER AREA
- COUNCIL TAX BAND B
- END TOWNHOUSE
- SPACIOUS THROUGHOUT
- GREAT LOCAL AMENITIES
- EPC RATING C
- FREEHOLD



Ready Steady Move are delighted to market this charming two-bedroom end townhouse on Plumbley Hall Road presents an excellent opportunity for first-time buyers and investors alike. Situated in a tranquil cul-de-sac, the property is just a stone's throw away from the local park and a variety of amenities, making it an ideal location for those seeking convenience and community.

Upon entering, you are welcomed by a practical entrance porch that leads into a spacious living room, perfect for relaxation and entertaining. The separate kitchen is well-equipped with integrated appliances and offers ample storage with its wall and base units, catering to all your culinary needs.

The first floor features two generously sized double bedrooms, providing comfortable living spaces for individuals or families. The bathroom is thoughtfully designed, complete with a walk in shower.

Outside, the property boasts a delightful rear garden, laid to lawn with a paved area, ideal for enjoying sunny days or hosting gatherings. Additionally, the townhouse includes parking for one vehicle at the rear, adding to the convenience of this lovely home.



These particulars, whilst believed to be accurate are set out as a general outline only for guidance and do not constitute any part of an offer or contract. Intending purchasers should not rely on them as statements of representation of fact, but must satisfy themselves by inspection or otherwise as to their accuracy. No person in this firm's employment has the authority to make or give any representation or warranty in respect of the property.